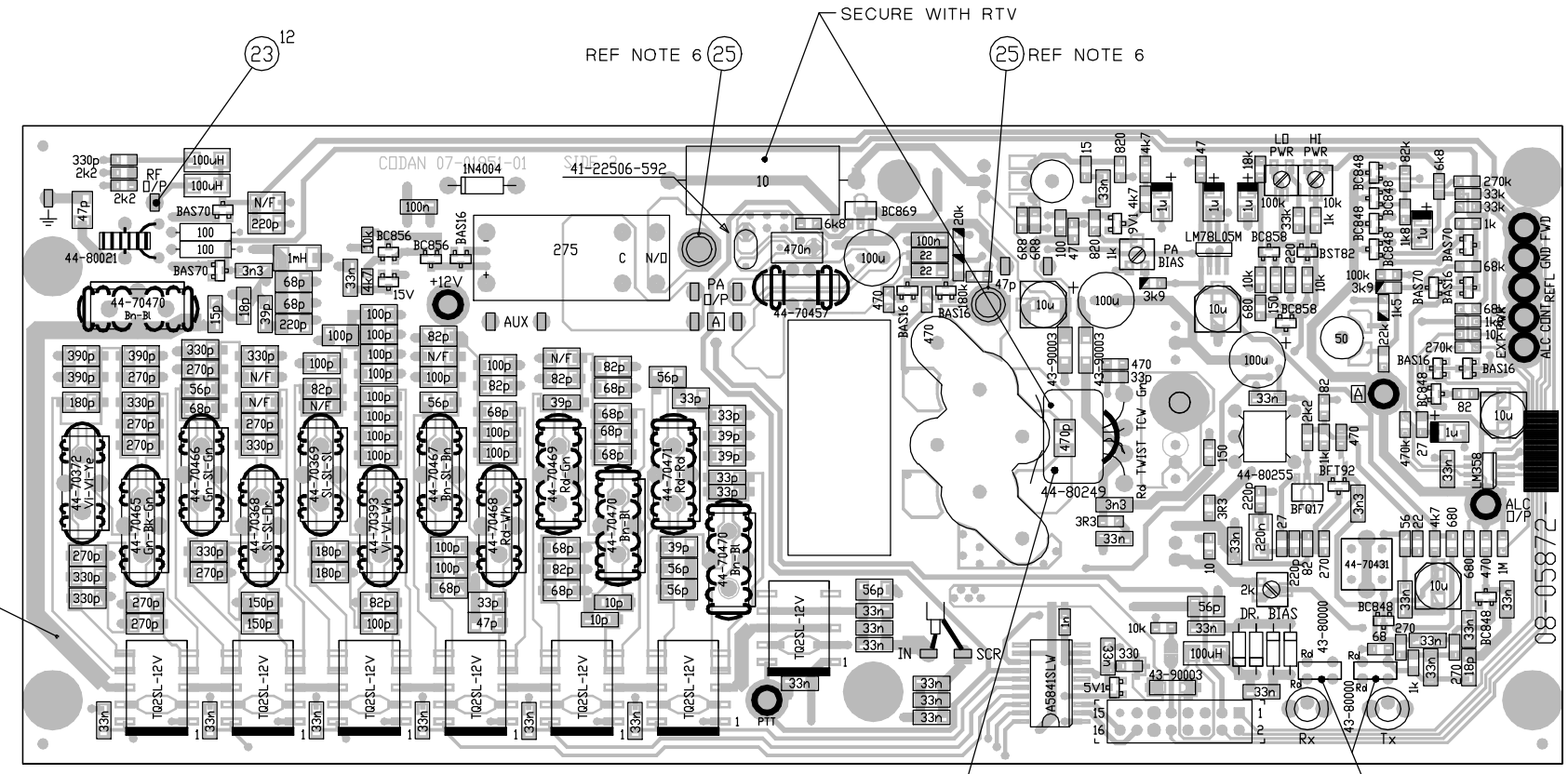


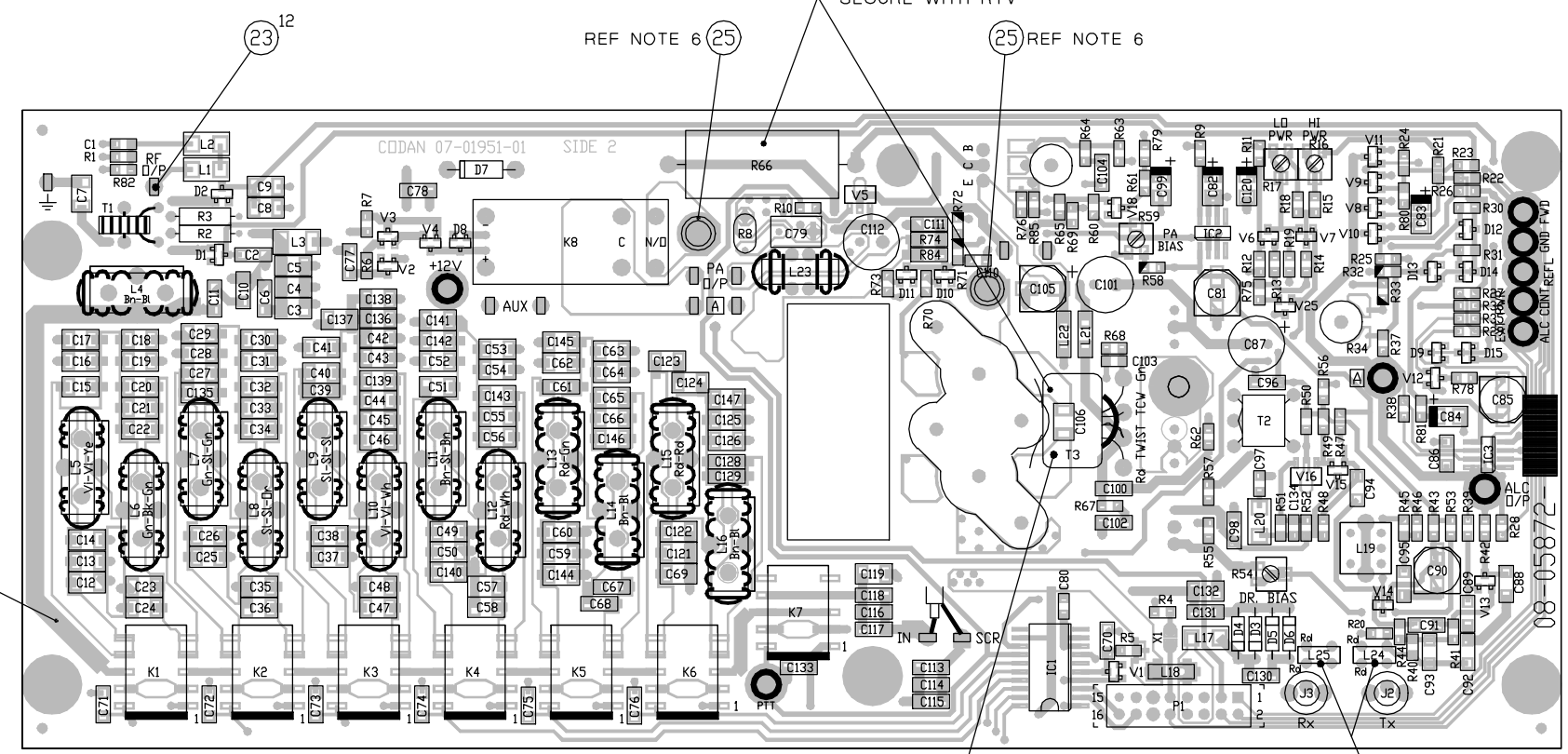
DO NOT SCALE

ISSUE 2:  
C3-C5, C8 & C9 WERE 1206  
C/R 26841  
NJA 19-2-01

A  
B  
C  
D  
E  
F  
G  
H



COMPONENT VALUES



COMPONENT REFERENCE DESIGNATORS

- NOTES:
1. RESISTORS SHOWN ARE 1%
  2. SECURE ALL TOROIDAL INDUCTORS TO PCB, USING JET MELT.
  3. DIODES ARE 23-10001, OR EQUIVALENT, UNLESS OTHERWISE STATED.
  4. ASSEMBLE L24 & L25 WITH RED WIRES AS SHOWN.
  5. T3 IS FITTED OVER C106.
  6. FIT ITEM (25) USING AVDEL RIVET MACHINE.

| SHEET | ASSEMBLY     |
|-------|--------------|
| 1 & 2 | 08-05872-001 |
| 3 & 4 | 08-05872-002 |

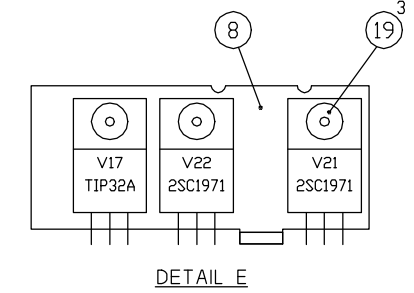
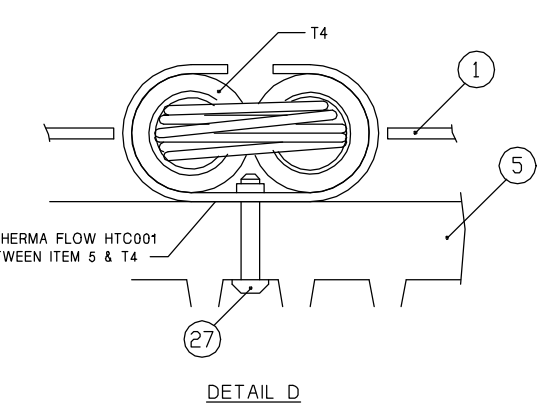
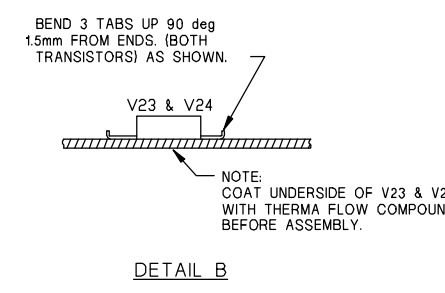
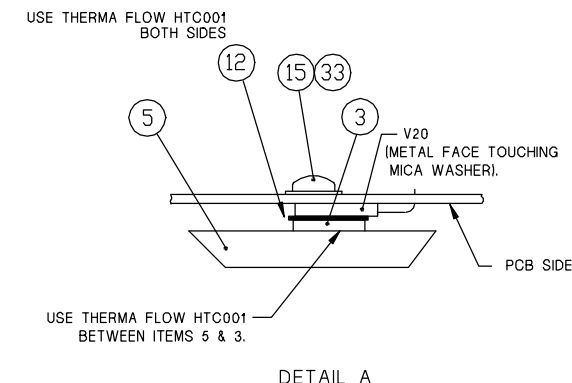
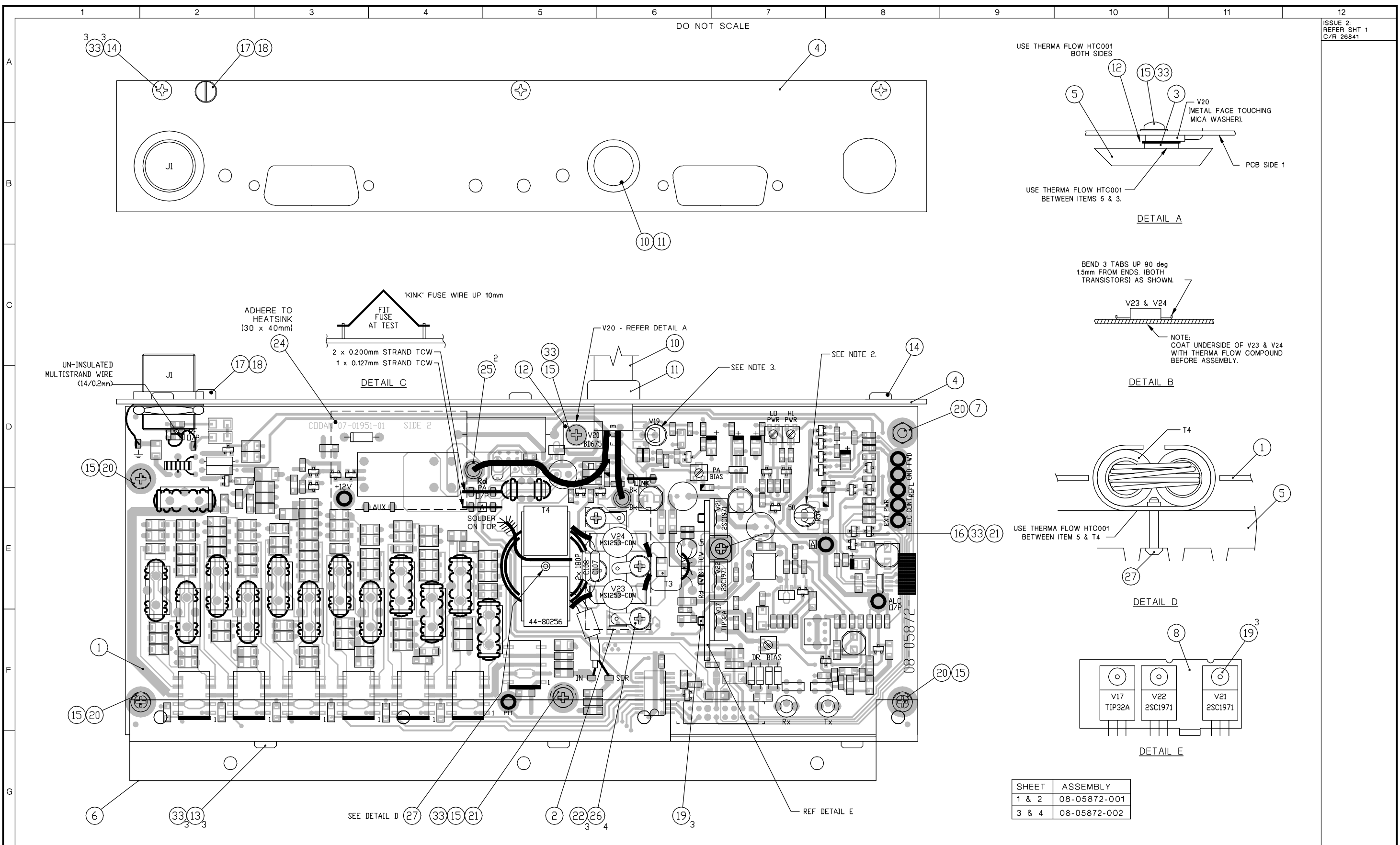
PCB : 07-01951-01

FILE No.  
08-05872A\_2.DWG

|                     |                                    |          |   |
|---------------------|------------------------------------|----------|---|
|                     | SCALE                              | 2:1      | © CODAN PTY LTD, A.C.N. 007 590 605: 1999<br>TITLE<br>PA AND FILTER (INTERIM)<br>PCB ASSEMBLY (26.5MHz) |
|                     | DATE                               | 31-10-00 |   |
| MATERIAL            | CHKD                               | NJA      | 6-11-00   |
| FINISH              | APPD                               | SCS      | 8-11-00   |
|                     | TOLERANCES UNLESS OTHERWISE STATED |          | A1  |
| 2 PLACES DEC. ±0.25 |                                    |          | DRAWING/DOC NO.<br>08-05872   |
| 1 PLACE DEC. ±0.5   |                                    |          |   |
| 0 PLACE DEC. ±1     |                                    |          |   |
| ANGULAR ±2°         |                                    |          | ISS   |
|                     |                                    |          | 1 2   |
| DIMENSIONS IN mm    |                                    |          | SHT. 1  |
|                     |                                    |          | OF 4  |

DO NOT SCALE

ISSUE 2:  
REFER SHT 1  
C/R 26841



| SHEET | ASSEMBLY     |
|-------|--------------|
| 1 & 2 | 08-05872-001 |
| 3 & 4 | 08-05872-002 |

PCB : 07-01951-01

FILE No.  
08\05872A\_2.DWG

- NOTES:
1. ALL LINKS ARE 22SWG.
  2. FIT HEATSHRINK SLEEVE (ITEM 28) X 8mm OVER R34, ENSURING THAT TOP IS COVERED.
  3. COAT WITH THERMA-FLOW COMPOUND, INSERT INTO HEATSINK (ITEM 5) AND SOLDER.
  4. ITEM 7, ITEM 13(6 OFF), ITEM 14(2 OFF), ITEM 15(3 OFF), ITEM 29, ITEM 32 & ITEM 33(11 OFF) ARE OFFSET DELIVERY AND FITTED AT FINAL ASSEMBLY (REFER 08-04961-XXX).

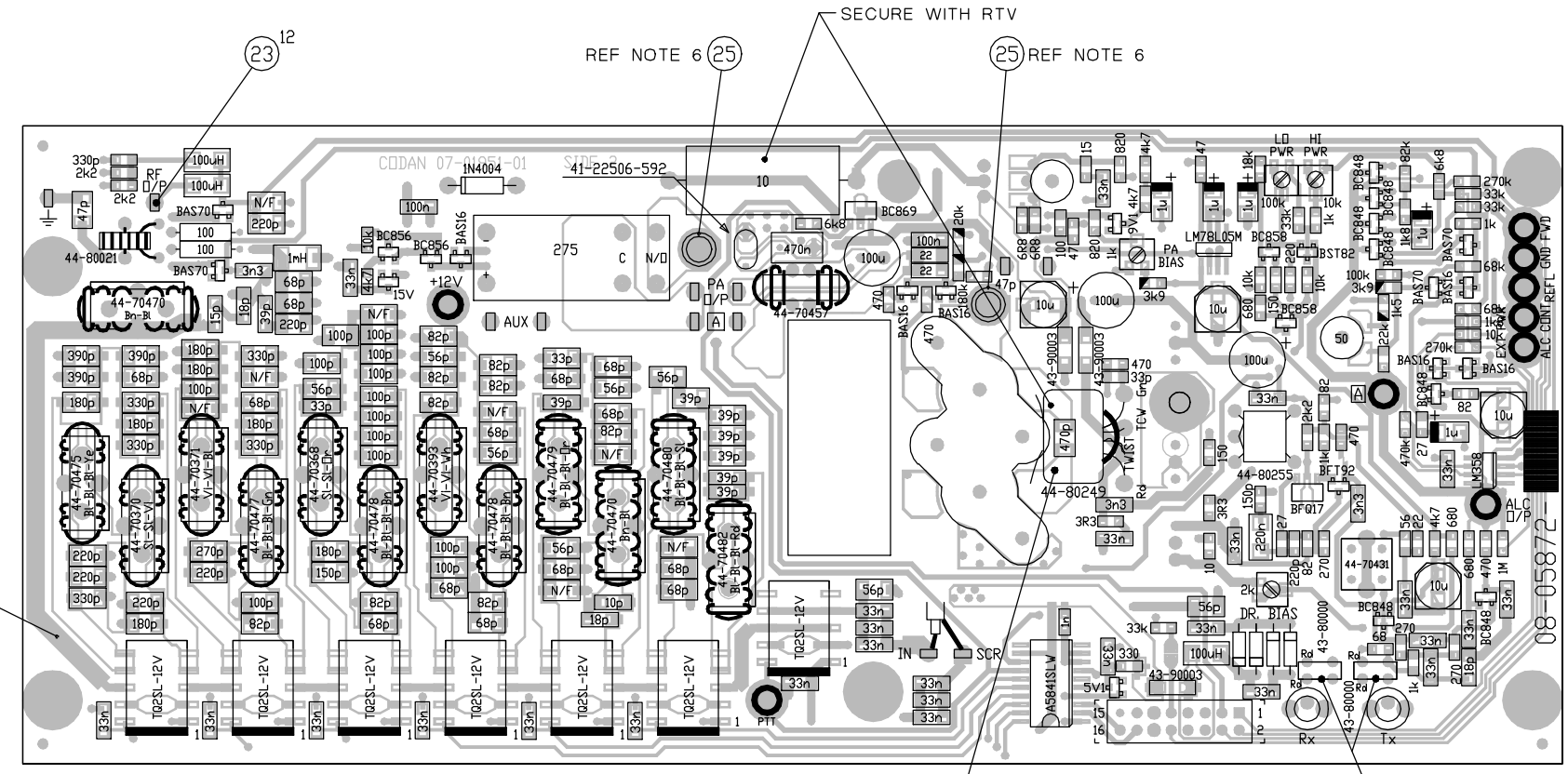
| CODAN  |     | SCALE | DATE                               | TITLE                    |             |
|--------|-----|-------|------------------------------------|--------------------------|-------------|
| DRN    | ILT | 2:1   | 31-10-00                           | PA AND FILTER (INTERIM)  |             |
| CHKD   | NJA |       | 6-11-00                            | FINAL ASSEMBLY (26.5MHz) |             |
| APPD   | SCS |       | 8-11-00                            | DRAWING/DOC NO.          |             |
| FINISH |     |       | TOLERANCES UNLESS OTHERWISE STATED |                          |             |
|        |     |       | 2 PLACES DEC. ±0.25                |                          |             |
|        |     |       | 1 PLACE DEC. ±0.5                  |                          |             |
|        |     |       | 0 PLACE DEC. ±1                    |                          |             |
|        |     |       | ANGULAR ±2°                        |                          |             |
| ISS    | 1   | 2     |                                    |                          | SHT. 2 OF 4 |

DIMENSIONS IN mm

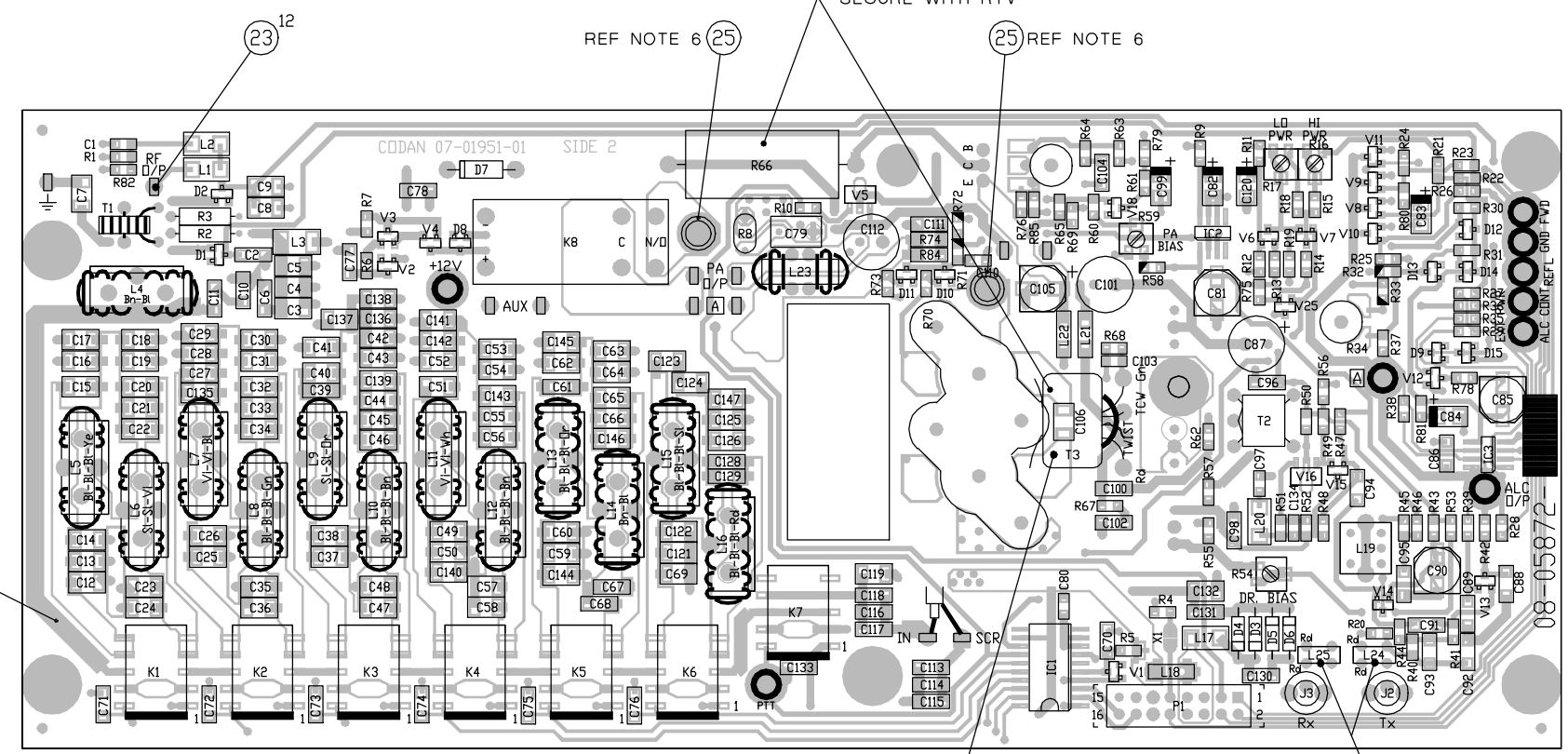
DO NOT SCALE

ISSUE 2:  
C3-C5, C8 & C9 WERE 120p  
C25 WAS 270p  
C31 & C32 WERE 100p  
C144 WAS N/F  
C/R 26841  
NJA 19-2-01


A  
B  
C  
D  
E  
F  
G  
H



COMPONENT VALUES




COMPONENT REFERENCE DESIGNATORS

- NOTES:
1. RESISTORS SHOWN  ARE 1%
  2. SECURE ALL TOROIDAL INDUCTORS TO PCB, USING JET MELT.
  3. DIODES ARE 23-10001, OR EQUIVALENT, UNLESS OTHERWISE STATED.
  4. ASSEMBLE L24 & L25 WITH RED WIRES AS SHOWN.
  5. T3 IS FITTED OVER C106.
  6. FIT ITEM (25) USING AVDEL RIVET MACHINE.

|       |              |
|-------|--------------|
| SHEET | ASSEMBLY     |
| 1 & 2 | 08-05872-001 |
| 3 & 4 | 08-05872-002 |

PCB : 07-01951-01

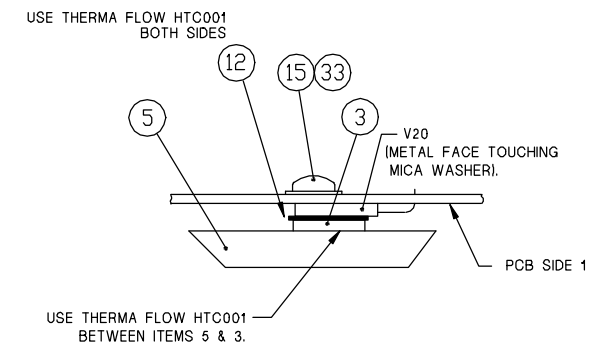
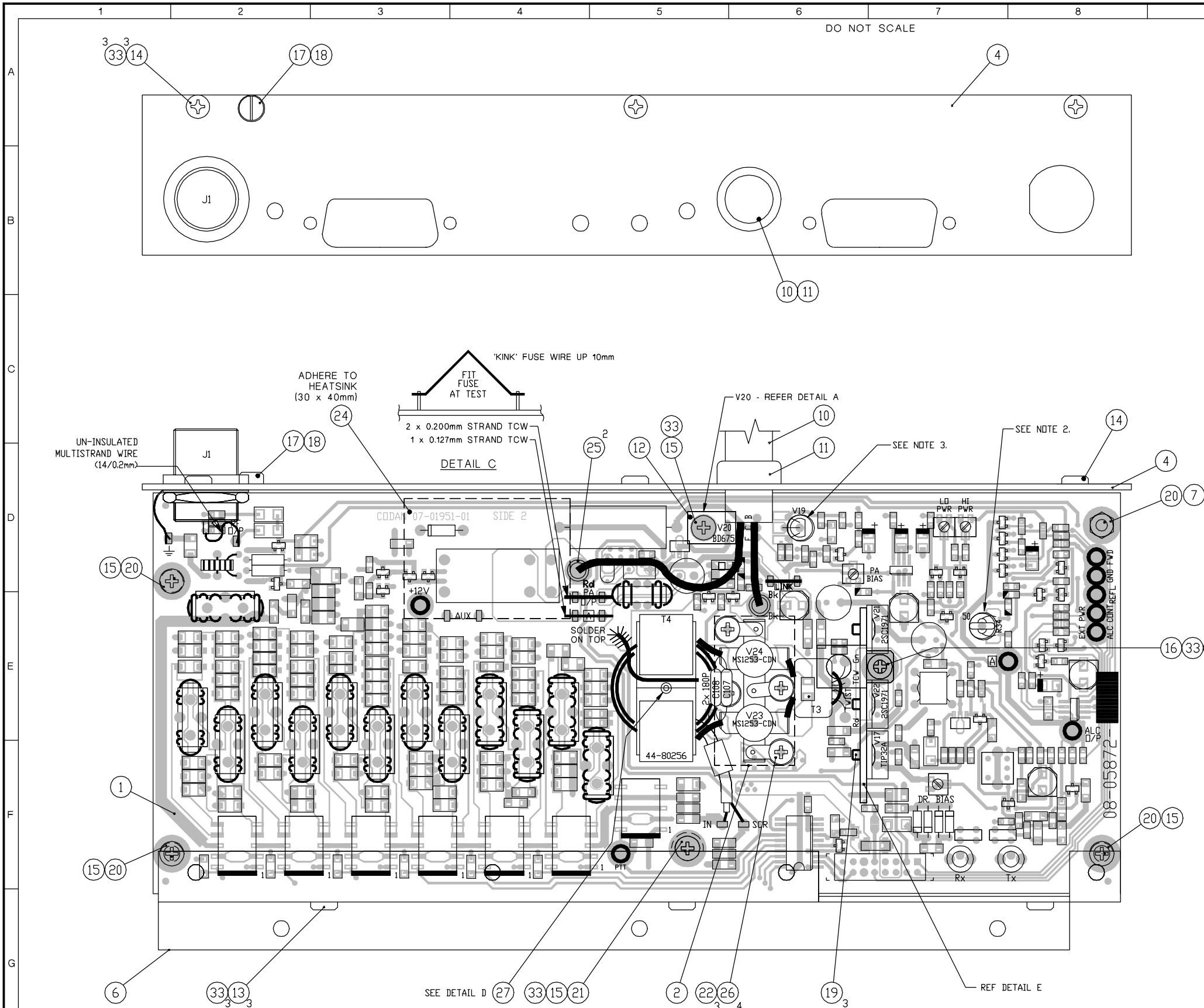
FILE No.  
08-05872B\_2.DWG

|   |                                    |          |   |
|---|------------------------------------|----------|---|
|  | SCALE                              | 2:1      | © CODAN PTY LTD, A.C.N. 007 590 605: 1999<br>TITLE<br>PA AND FILTER (INTERIM)<br>PCB ASSEMBLY (30.0MHz) |
|   | DATE                               | 31-10-00 |   |
| MATERIAL  | CHKD                               | NJA      | 6-11-00   |
| FINISH  | APPD                               | SCS      | 8-11-00   |
|   | TOLERANCES UNLESS OTHERWISE STATED |          |   |
| 2 PLACES DEC. ±0.25   |                                    |          |   |
| 1 PLACE DEC. ±0.5   |                                    |          |   |
| 0 PLACE DEC. ±1   |                                    |          |   |
| ANGULAR ±2°   |                                    |          |   |
| ISS   | 1                                  | 2        |   |
| SHT.  | 3                                  |          | OF 4  |

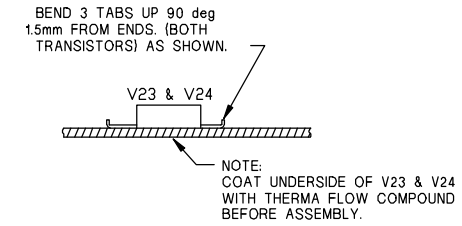
DIMENSIONS IN mm

DO NOT SCALE

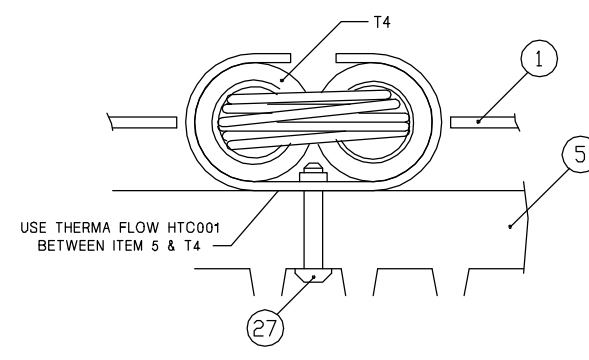
ISSUE 2:  
REFER SHT 3  
C/R 26841



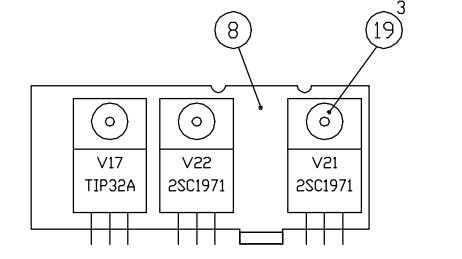
DETAIL A



DETAIL B



DETAIL D



DETAIL E

|       |              |
|-------|--------------|
| SHEET | ASSEMBLY     |
| 1 & 2 | 08-05872-001 |
| 3 & 4 | 08-05872-002 |

PCB : 07-01951-01

FILE No.  
08\05872B\_2.DWG

- NOTES:
1. ALL LINKS ARE 22SWG.
  2. FIT HEATSHRINK SLEEVE (ITEM 28) X 8mm OVER R34, ENSURING THAT TOP IS COVERED.
  3. COAT WITH THERMA-FLOW COMPOUND, INSERT INTO HEATSINK (ITEM 5) AND SOLDER.
  4. ITEM 7, ITEM 13(6 OFF), ITEM 14(2 OFF), ITEM 15(3 OFF), ITEM 29, ITEM 32 & ITEM 33(11 OFF) ARE OFFSET DELIVERY AND FITTED AT FINAL ASSEMBLY (REFER 08-04961-XXX).

|          |                                    |       |   |         |
|----------|------------------------------------|-------|---|---------|
|          | SCALE                              | 2:1   | © CODAN PTY LTD, A.C.N. 007 590 605: 1997<br>TITLE<br>PA AND FILTER (INTERIM)<br>FINAL ASSEMBLY (30.0MHZ) |         |
|          | DRN                                | ILT   |   | DATE    |
|          | CHKD                               | NJA   |   | 6-11-00 |
| MATERIAL | APPD                               | SCS   | 8-11-00   |         |
| FINISH   | TOLERANCES UNLESS OTHERWISE STATED |       | DRAWING/DOC NO.<br>08-05872   |         |
|          | 2 PLACES DEC.                      | ±0.25 |   |         |
|          | 1 PLACE DEC.                       | ±0.5  |   |         |
| ISS      |                                    | 1 2   | SHT. 4 OF 4   |         |

DIMENSIONS IN mm